

---

BOOK 2026

 **City**  
Refin Contract Solutions







## CONTENTS

---

### Refin Contract Solutions

#### CONCRETE EFFECT

Minimale 6

#### STONE EFFECT

**NEW** Calcarea 14  
Nuova Ardenne 20  
Quarzia 26

#### WOOD EFFECT

**NEW** Ligneo 34  
Lymphe 44

---

### Outdoor Solutions

Concrete 52  
Nuova Ardenne 54  
Pierres 55  
Quarzia 56

## INTRO

### Refin Contract Solutions

La gamma City si rinnova con una nuova identità visiva, un nuovo logo e una nuova line-up di prodotti dal design moderno ed eclettico. Un'evoluzione pensata per rispondere alle attuali esigenze del mercato dell'edilizia e delle forniture professionali.

Le nuove collezioni completano l'offerta in modo attento e versatile, con una proposta a spessore ridotto che contribuisce a ridurre l'impatto ambientale del prodotto e a contenere i costi di trasporto grazie al peso ridotto.

Anche la gamma a spessore 20 mm per spazi esterni si arricchisce, garantendo continuità estetica e completezza funzionale.

Un'offerta di soluzioni in gres porcellanato made in Italy che unisce qualità, design e accessibilità, senza compromessi.

City rappresenta il nostro impegno nel fornire soluzioni avanzate in grado di combinare estetica contemporanea, innovazione tecnologica e responsabilità ambientale, per rispondere alle sfide dell'edilizia di domani.

The City range is renewed with a new visual identity, a new logo, and a new line-up of products with a modern and eclectic design. This evolution is designed to meet the current needs of the construction and professional supplies market.

The new collections enhance the offering in an attentive and versatile way, offering a reduced thickness option that helps reduce the product's environmental impact and lowers transportation costs thanks to its reduced weight.

The 20 mm thickness range for outdoor spaces is also enriched, ensuring aesthetic continuity and functional completeness. An offering of made in Italy porcelain stoneware solutions that combines quality, design, and accessibility, without compromise.

City represents our commitment to providing advanced solutions that combine contemporary aesthetics, technological innovation, and environmental responsibility, to meet the challenges of tomorrow's construction.

La gamma City si rinnova con una nuova identità visiva, un nuovo logo e una nuova gamma di prodotti dal design moderno ed eclettico. Un'evoluzione concepita per rispondere ai bisogni attuali del mercato della costruzione e delle forniture professionali.

Le nuove collezioni completano l'offerta in modo attento e versatile, con una proposta a spessore ridotto che contribuisce a ridurre l'impatto ambientale del prodotto e a contenere i costi di trasporto grazie al suo peso ridotto. La gamma di 20 mm di spessore per gli spazi esterni si arricchisce, garantendo continuità estetica e completezza funzionale.

Una offerta di soluzioni in gres ceramica made in Italy che unisce qualità, design e accessibilità, senza compromessi.

City rappresenta il nostro impegno a fornire soluzioni avanzate in grado di combinare estetica contemporanea, innovazione tecnologica e responsabilità ambientale, per rispondere alle sfide della costruzione di domani.

## Porcelain stoneware solutions for every project.

## New reduced thickness.

## Minimalist and contemporary design in a versatile range.

## Quality, sustainability and affordability.



CONCRETE EFFECT

# Minimale

Thickness

± 8.0 mm  
8.5 mm



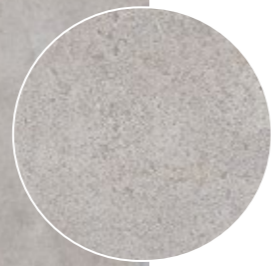
Caratteristiche Tecniche/ Technical Features

UNI EN ISO 10545-14	DIN EN 16165:2023 Annex B (previously DIN 51130)	DIN EN 16165:2023 Annex A (previously DIN 51097)	BS EN 16165:2021 Annex C (previously BS 7976-2:2002)	B.C.R.A. Rep. CEC/B1	ANSI A326.3 (BOT 3000) Test Method
Classe 5 / Class 5	R10	A+B	PTV <sub>96</sub> ≥ 36 Wet	Conforme / Compliant	wet DCOF ≥ 0.50



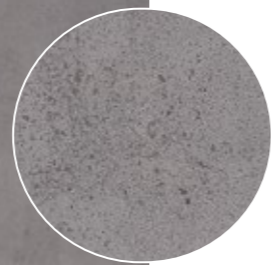
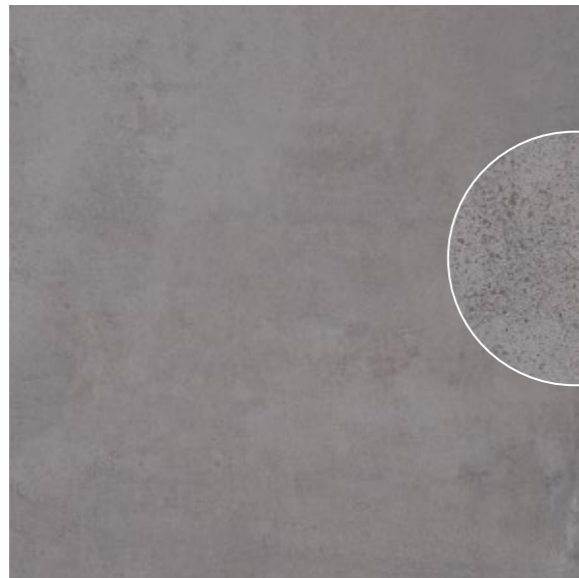
Thickness	± 8 mm	± 8.5 mm
	60×60/24"×24" R 30×60/12"×24" R 7×60/2 <sup>7/8</sup> "×24" R Battiscopa	60×120/24"×48" R

CENERE



- 60×120/24"×48" R RH99
- 60×60/24"×24" R RH95
- 30×60/12"×24" R RH91
- 7×60/2<sup>7/8</sup>"×24" R Battiscopa RI68

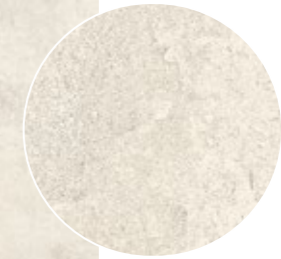
ANTRACITE



- 60×120/24"×48" R RH97
- 60×60/24"×24" R RH93
- 30×60/12"×24" R RH89
- 7×60/2<sup>7/8</sup>"×24" R Battiscopa RI66



BIANCO



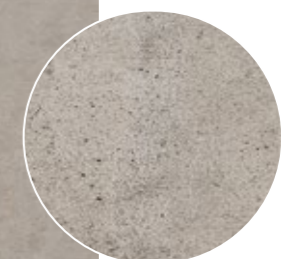
- 60×120/24"×48" R RH64
- 60×60/24"×24" R RH65
- 30×60/12"×24" R RH63
- 7×60/2<sup>7/8</sup>"×24" R Battiscopa RI65

BEIGE



- 60×120/24"×48" R RH98
- 60×60/24"×24" R RH94
- 30×60/12"×24" R RH90
- 7×60/2<sup>7/8</sup>"×24" R Battiscopa RI67

FANGO



- 60×120/24"×48" R RI00
- 60×60/24"×24" R RH96
- 30×60/12"×24" R RH92
- 7×60/2<sup>7/8</sup>"×24" R Battiscopa RI69





# STONE EFFECT Calcarea



### Thickness

± 8.5 mm  
8 mm



### Caratteristiche Tecniche/ Technical Features

UNI EN ISO 10545-14	DIN EN 16165:2023 Annex B (previously DIN 51130)	DIN EN 16165:2023 Annex A (previously DIN 51097)	BS EN 16165:2021 Annex C (previously BS 7976-2:2002)	B.C.R.A. Rep. CEC/B1	ANSI A326.3 (BOT 3000) Test Method
Classe 5 / Class 5	R10	A+B	PTV <sub>96</sub> ≥ 36 Wet	Conforme / Compliant	wet DCOF ≥ 0.50

Thickness

8 mm

8.5 mm

60×60/24"×24" R  
30×60/12"×24" R

60×120/24"×48" R

AVORIO



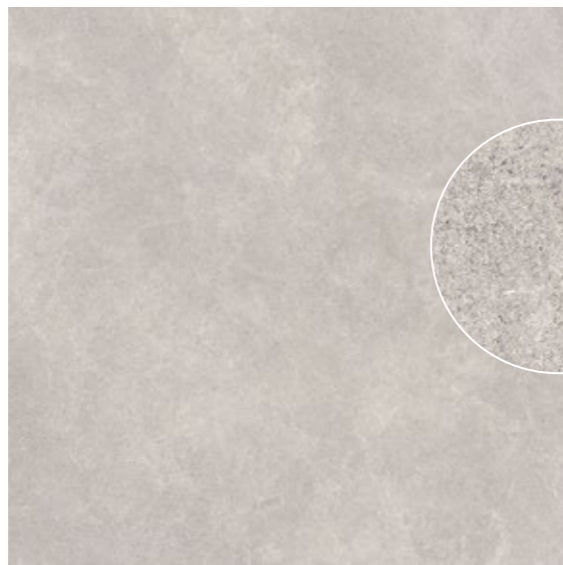
60×120/24"×48" R RQ73  
60×60/24"×24" R RQ92  
30×60/12"×24" R RQ95  
7×60/2<sup>7/8</sup>"×24" R Battiscopa RQ81

BEIGE



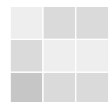
60×120/24"×48" R RQ74  
60×60/24"×24" R RQ93  
30×60/12"×24" R RQ96  
7×60/2<sup>7/8</sup>"×24" R Battiscopa RQ82

GRIGIO



60×120/24"×48" R RQ75  
60×60/24"×24" R RQ94  
30×60/12"×24" R RQ97  
7×60/2<sup>7/8</sup>"×24" R Battiscopa RQ83

V2  
Slight



Gres porcellanato/ Porcelain stoneware



Beige 60×120/24"×48" R





STONE EFFECT

# Nuova Ardenne

### Thickness

- ± 8.0 mm
- 8.5 mm
- 20 mm

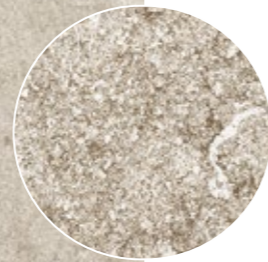
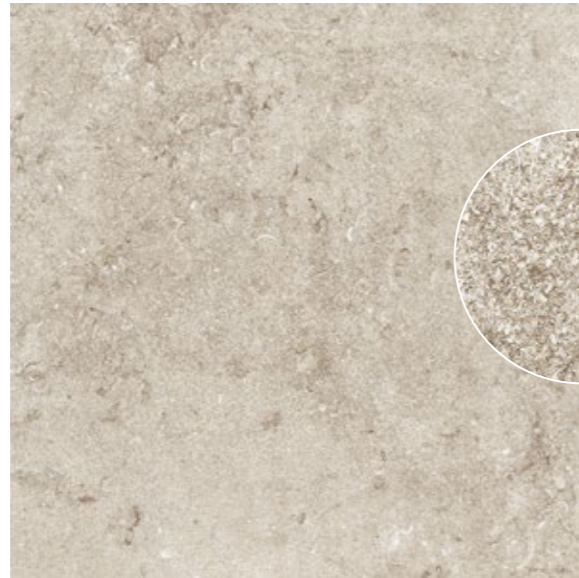


### Caratteristiche Tecniche/ Technical Features

UNI EN ISO 10545-14	DIN EN 16165:2023 Annex B (previously DIN 51130)	DIN EN 16165:2023 Annex A (previously DIN 51097)	BS EN 16165:2021 Annex C (previously BS 7976-2:2002)	B.C.R.A. Rep. CEC/B1	ANSI A326.3 (BOT 3000) Test Method
Classe 5 / Class 5	R10 R11 <b>OUT2.0</b>	A+B A+B+C <b>OUT2.0</b>	PTV <sub>90</sub> ≥ 36 Wet	Conforme / Compliant	wet DCOF ≥ 0.50 wet DCOF ≥ 0.55 <b>OUT2.0</b>

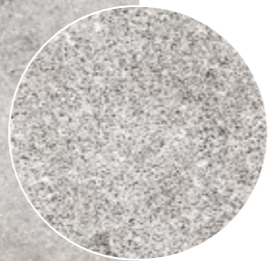
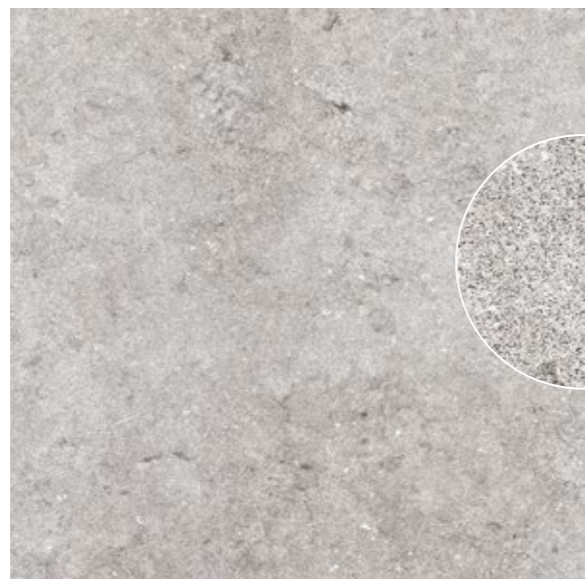
Thickness	8 mm	8.5 mm	20 mm
	60×60/24"×24" R 7×60/27 <sup>60</sup> ×24" R Battiscopa	60×120/24"×48" R	60×60/24"×24" R

BEIGE



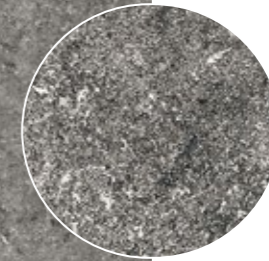
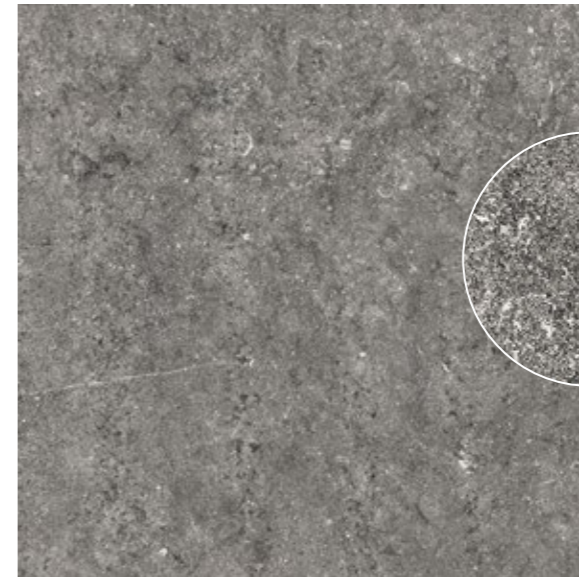
- 60×120/24"×48" R RH68
- 60×60/24"×24" R RH60
- 60×60/24"×24" R OUT2.0 RI75
- 7×60/27<sup>60</sup>×24" R Battiscopa RI72

ARGENTO



- 60×120/24"×48" R RH66
- 60×60/24"×24" R RH58
- 60×60/24"×24" R OUT2.0 RI73
- 7×60/27<sup>60</sup>×24" R Battiscopa RI70

GRAFITE



- 60×120/24"×48" R RH67
- 60×60/24"×24" R RH59
- 60×60/24"×24" R OUT2.0 RI74
- 7×60/27<sup>60</sup>×24" R Battiscopa RI71

V4  
Substantial







STONE EFFECT  
**Quarzia**

Thickness

- ≠ 8.0 mm
- 8.5 mm
- 20 mm



Caratteristiche Tecniche/ Technical Features

UNI EN ISO 10545-14	DIN EN 16165:2023 Annex B (previously DIN 51130)	DIN EN 16165:2023 Annex A (previously DIN 51097)	BS EN 16165:2021 Annex C (previously BS 7976-2:2002)	B.C.R.A. Rep. CEC/B1	ANSI A326.3 (BOT 3000) Test Method
Classe 5 / Class 5	R10 R11 <b>OUT2.0</b>	A+B A+B+C <b>OUT2.0</b>	PTV <sub>wet</sub> ≥ 36 Wet	Conforme / Compliant	wet DCOF ≥ 0.50 wet DCOF ≥ 0.55 <b>OUT2.0</b>



Thickness	8 mm	8.5 mm	20 mm
	60×60/24"×24" R 30×60/12"×24" R 7×60/27 <sup>8/16</sup> "×24" R Battiscopa	60×120/24"×48" R	60×60/24"×24" R

BIANCO



- 60×120/24"×48" R RH80
- 60×60/24"×24" R RH72
- 30×60/12"×24" R RH76
- 7×60/27<sup>8/16</sup>"×24" R Battiscopa RI63

AVORIO



- 60×120/24"×48" R RH79
- 60×60/24"×24" R RH71
- 60×60/24"×24" R OUT2.0 RN25
- 30×60/12"×24" R RH75
- 7×60/27<sup>8/16</sup>"×24" R Battiscopa RI62

GRIGIO



- 60×120/24"×48" R RH81
- 60×60/24"×24" R RH73
- 60×60/24"×24" R OUT2.0 RN26
- 30×60/12"×24" R RH77
- 7×60/27<sup>8/16</sup>"×24" R Battiscopa RI64

ARDESIA



- 60×120/24"×48" R RH78
- 60×60/24"×24" R RH70
- 30×60/12"×24" R RH74
- 7×60/27<sup>8/16</sup>"×24" R Battiscopa RI61

V3  
Moderate







Avorio 22,5x90/9" x 36" R

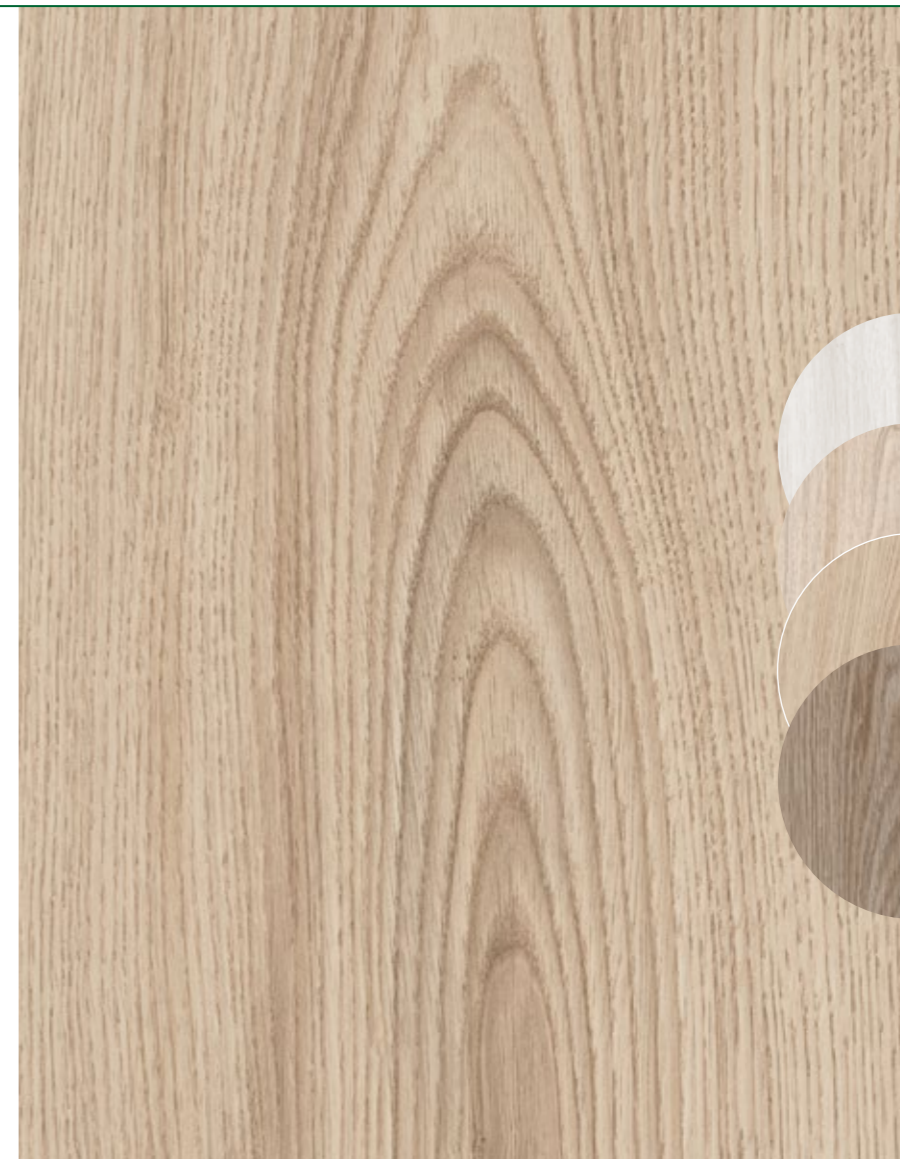
WOOD EFFECT

# Ligneo

NEW

Thickness

8 mm



Caratteristiche Tecniche/ Technical Features

UNI EN ISO 10545-14

Classe 5 / Class 5

DIN EN 16165:2023 Annex B (previously DIN 51130)

R10

DIN EN 16165:2023 Annex A (previously DIN 51097)

A+B

B.C.R.A. Rep. CEC/81

Conforme / Compliant

ANSI A326.3 (BOT 3000) Test Method

wet DCOF ≥ 0.50





Thickness ± 8 mm

22,5x90/9"x36" R

AVORIO



22,5x90/9"x36" R

RQ59

NATURALE



22,5x90/9"x36" R

RQ61

SABBIA



22,5x90/9"x36" R

RQ60

NOCE



22,5x90/9"x36" R

RQ62

V3  
Moderate



Gres porcellanato/ Porcelain stoneware





WOOD EFFECT

# Lymphhe

Thickness

± 9 mm



Caratteristiche Tecniche/ Technical Features

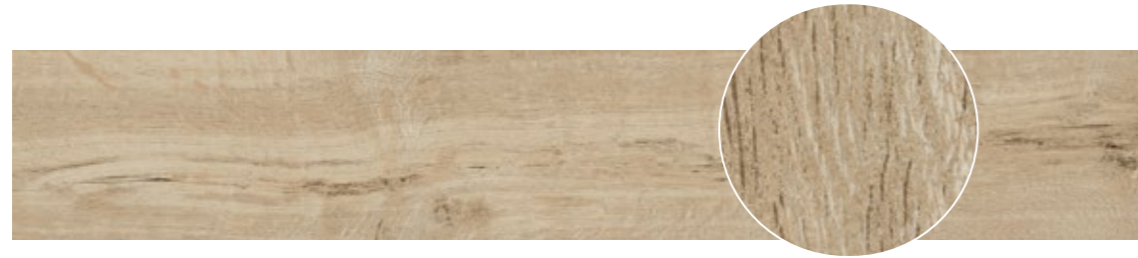
UNI EN ISO 10545-14	DIN EN 16165:2023 Annex B (previously DIN 51130)	DIN EN 16165:2023 Annex A (previously DIN 51097)	BS EN 16165:2021 Annex C (previously BS 7976-2:2002)	B.C.R.A. Rep. CEC/B1	ANSI A326.3 (BOT 3000) Test Method
Classe 5 / Class 5	R10	A+B	PTV <sub>96</sub> ≥ 36 Wet	Conforme / Compliant	wet DCOF ≥ 0.50



Thickness

± 9 mm

JEUNE



25x150/10"x60" R

OL85

CHIC



25x150/10"x60" R

OL87

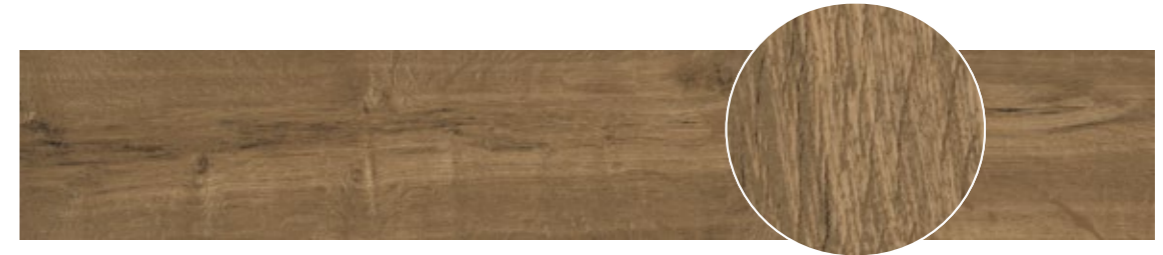
NATUREL



25x150/10"x60" R

OL86

FONCE'



25x150/10"x60" R

OL88



OUTDOOR SOLUTION



Concrete Dark 60x60 24"x24" R OUT2.0

CONCRETE EFFECT  
**Concrete**

Thickness

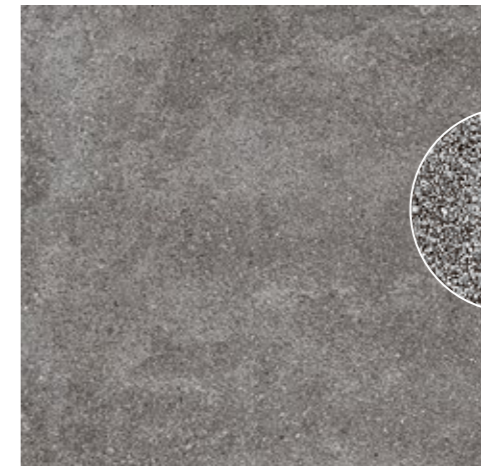
± 20 mm

GREY



60x60/24"x24" R OUT2.0 LN70

DARK



60x60/24"x24" R OUT2.0 LN71

Caratteristiche Tecniche/ Technical Features

UNI EN ISO 10545-14	DIN EN 16165:2023 Annex B (previously DIN 51130)	DIN EN 16165:2023 Annex A (previously DIN 51097)	BS EN 16165:2021 Annex C (previously BS 7976-2:2002)	B.C.R.A. Rep. CEC/B1	ANSI A326.3 (BOT 3000) Test Method
Classe 5 / Class 5	R11	A+B+C	PTV <sub>96</sub> ≥ 36 Wet	Conforme / Compliant	wet DCOF ≥ 0.55

STONE EFFECT

# Nuova Ardenne

Thickness

± 20 mm

BEIGE



60×60/24"×24" R OUT2.0

RI75

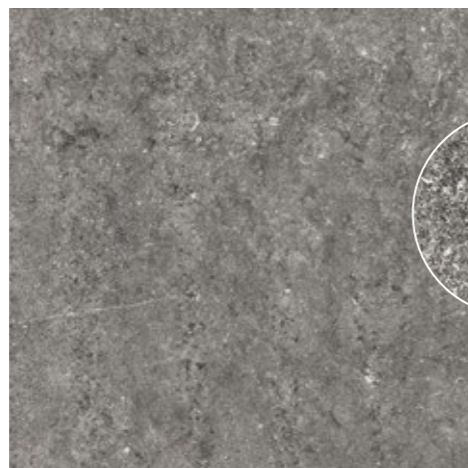
ARGENTO



60×60/24"×24" R OUT2.0

RI73

GRAFITE



60×60/24"×24" R OUT2.0

RI74

V4  
Substantial



Gres porcellanato/ Porcelain stoneware

STONE EFFECT

# Pierres

Thickness

± 20 mm

BEIGE



60×60/24"×24" R OUT2.0

MO52

GRIS



60×60/24"×24" R OUT2.0

MO53

Caratteristiche Tecniche/ Technical Features

UNI EN ISO 10545-14	DIN EN 16165:2023 Annex B (previously DIN 51130)	DIN EN 16165:2023 Annex A (previously DIN 51097)	BS EN 16165:2021 Annex C (previously BS 7976-2:2002)	B.C.R.A. Rep. CEC/B1	ANSI A326.3 (BOT 3000) Test Method
Classe 5 / Class 5	R11	A+B+C	PTV <sub>96</sub> ≥ 36 Wet	Conforme / Compliant	wet DCOF ≥ 0.55

STONE EFFECT

# Quarzia

Thickness

± 20 mm

AVORIO



60x60/24"x24" R OUT2.0 RN25

GRIGIO



60x60/24"x24" R OUT2.0 RN26



Pierres Gris 60x60 24"x24" R OUT2.0

V3  
Moderate



Gres porcellanato/ Porcelain stoneware

## Legenda/Legend Gres Fine Porcellanato – EN 14411 ISO 13006 Gruppo Bla Annex G

	Regulation	Required standards	Refin Value	
Dimensioni/Sizes/Dimensions/ Abmessungen/Afmetingen/ Dimensiones	UNI EN ISO 10545/2		Non rettificato Not rectified	Rettificato* Rectified*
		Lunghezza e larghezza/Length and width/Longueur et largeur/Länge und Breite/Lengte en breedte/Longitud y anchura	± 0,6 % max 2 mm	± 0,3 % max 1mm
		Spessore/Thickness/Epaisseur/ Stärke/Dikte/Grosor	± 5 % max 0,5 mm	± 5 % max 0,5mm
		Rettilineità spigoli/Linearity/ Rectitude des arêtes/ Kantengeradheit/Rechtheid kanten/ Rectitud de los lados	± 0,5 % max 1,5mm	± 0,3 % max 0,8mm
		• Ortogonalità/Wedging/ Orthogonalité/Rechtwinkligkeit/ Haaksheid hoeken/Ortogonalidad	± 0,5 % max 2mm	± 0,3 % max 1,5mm
		Planarità/Warpage/Planéité/ Ebenflächigkeit/ Vlakheid/Planitud	± 0,5 % max 2mm	± 0,4 % max 1,8mm
* According to ISO 13006.				
Assorbimento acqua / Water absorption / Absorption d'eau / Wasseraufnahme / Waterabsorptie / Absorción de agua	UNI EN ISO 10545/3	≤ 0,5 %		≤ 0,2%
Resistenza alla flessione / Flexual Strength/Résistance à la flexion / Biegefestigkeit / Buigvastheid / Resistencia a la flexión	UNI EN ISO 10545/4	≥ 35 N/mm <sup>2</sup>		Conforme Compliant
		S ≥ 1300 N (thickness ≥ 7,5 mm)		Conforme Compliant
Coefficiente di restituzione (COR) / Coefficient of restitution (COR) / Coefficient de restitution (COR) / Schlagfestigkeit (COR) / Restitutiecoëfficiënt (COR) / Coeficiente de restitución (COR)	UNI EN ISO 10545/5	Valore consigliato ≥ 0,55/ Recommended value ≥ 0,55/ Valeur recommandée ≥ 0,55/ Empfohlener Wert ≥ 0,55/ Aanbevolen waarde ≥ 0,55/ Rvalor recomendado ≥ 0,55		Conforme Compliant
Resistenza all'abrasione profonda / Deep abrasion resistance / Resistance à l'abrasion / Widerstand gegen Tiefenverschleiß / Weerstand tegen afschuren / Resistencia a la abrasión profunda	UNI EN ISO 10545/6	≤ 175 mm <sup>3</sup> Solo per piastrelle non smaltate / Only for unglazed tiles		Conforme Compliant
Resistenza all'abrasione/ Abrasion resistance/ Résistance à l'abrasion/ Abriebbeständigkeit/ Weerstand tegen afschuring/ Resistencia a la abrasión	UNI EN ISO 10545/7	PEI Solo per piastrelle smaltate / Only for glazed tiles		
Coefficiente di dilatazione termica lineare / Coefficient of thermal linear expansion / Coefficient de dilatation thermique linear / Linearer Wärmeausdehnungskoeffizient / Lineaire thermische uitzetting / Coeficiente de dilatación termica linear	UNI EN ISO 10545/8	Metodo di prova disponibile / Tests method available / Methode d'essai disponible / Verfügbares / rüfverfahren / Testmethode beschikbaar / Método de prueba disponible		≤ 7 · 10 <sup>-4</sup> ·C <sup>-1</sup>
Resistenza agli sbalzi termici / Thermal shock resistance / Resistance aux écarts de température / Temperaturwechselbeständigkeit / Temperatuurwisselingen / Resistencia al choque térmico	UNI EN ISO 10545/9	Nessun campione deve presentare difetti visibili / No sample must show visible defects / Aucun échantillon ne doit présenter des défauts visibles / Kein Exemplar darf sichtbare Schäden aufweisen / Geen enkel monster mag zichtbare gebreken vertonen / Ninguna muestra debe presentar defectos visibles		Conforme Compliant
Dilatazione all'umidità / Moisture expansion / Dilatation à l'humidité / Feuchtigkeitsausdehnung / Uitzetting door vocht / Dilatación por la humedad	UNI EN ISO 10545/10	Metodo di prova disponibile / Tests method available / Methode d'essai disponible / Verfügbares / Prüfverfahren / Testmethode beschikbaar / Método de prueba disponible		≤ 0,02 % (0,2 mm/m)

## Legenda/Legend Gres Fine Porcellanato – EN 14411 ISO 13006 Gruppo Bla Annex G

	Regulation	Required standards	Refin Value
Resistenza al fuoco / Fire resistance / Résistance au feu / Brandverhalten / Brand weerstand / Resistencia al fuego	UNI EN ISO 13501-1	Dichiarare un valore / Declare a value  Classe A1 oppure A <sub>1H</sub> / Class A1 or A <sub>1H</sub>	A <sub>1H</sub>
Resistenza al gelo / Frost resistance / Résistance au gel / Frostbeständigkeit / Vorstandheid / Resistencia a la helada	UNI EN ISO 10545/9	Metodo di prova disponibile / Tests method available / Methode d'essai disponible / Verfügbares / rüfverfahren / Testmethode beschikbaar / Método de prueba disponible	≤ 0,02 % (0,2 mm/m)
Resistenza all'attacco chimico / Chemical resistance / Resistence à l'attaque chimique / Beständigkeit gegen Chemikalien / Chemische bestandheid / Resistencia al ataque químico	UNI EN ISO 10545/13		
Resistenza ai prodotti chimici di uso domestico ed agli additivi per piscina / Resistance to household chemicals and swimming pool salts	UNI EN ISO 10545/13	Classe minima B (GB per piastrelle smaltate) / Minimum class B (GB for glazed tiles)	A
Resistenza a basse concentrazioni di acidi e alcali / Resistance to low concentrations of acids and alkalis	UNI EN ISO 10545/13	Dichiarare una classe / Declare a class  Metodo di prova disponibile / Tests method available	LA
Resistenza ad alte concentrazioni di acidi e alcali / Resistance to high concentrations of acids and alkalis	UNI EN ISO 10545/13	Dichiarare una classe / Declare a class  Metodo di prova disponibile / Tests method available	HA
Resistenza alle macchie / Stain resistance / Insensibilité aux taches / Beständigkeit gegen Fleckenbildner / Substanzen / Weerstand tegen vlekken / Resistencia a las manchas	UNI EN ISO 10545/14	UGL Dichiarare un valore / UGL Declare a value  GL ≥ 3	Vedere interno See inside
Cessione di piombo e cadmio/ Lead and cadmium discharge/ Perte de plomb et cadmium/ Abgabe von Blei und Cadmium/ Ontaan van lood en cadmium/ Cesión de plomo y cadmio	UNI EN ISO 10545/15	Valore dichiarato / Declared value	Al limite di rilevamento / Than instrument limit
Indicazione di resistenza allo scivolamento / Assessment of slip resistance / Indication de la résistance au glissement / Bestimmung der Trittsicherheit / Indicatie voor de slipvastheid / Indicación de resistencia al deslizamiento	DIN EN 16165:2023 Annex B (previously DIN 51130)	Dichiarare un valore (R) / Declare a value (R)	Vedere interno See inside
	DIN EN 16165:2023 Annex A (previously DIN 51097)	Dichiarare un valore (A+B+C) / Declare a value (A+B+C)	Vedere interno See inside
Coefficiente di attrito dinamico / Measurement of dynamic coefficient of friction / Mesure du coefficient de frottement dynamique / Messung des dynamischen Reibungskoeffizienten / Meting van de dynamische wrijvingscoëfficiënt / Coeficiente de rozamiento dinámico	B.C.R.A. Rep. CEC/81	Asciutto > 0,40 / Bagnato > 0,40	Vedere interno See inside
	DCOF ANSI A326.3 (BOT 3000) Test Method	Dichiarare un valore / Declare a value	Vedere interno See inside

## Imballi/ Packing

	pcs x box	m <sup>2</sup> / m x box	kg x box	box x pallet	m <sup>2</sup> x pallet	kg x pallet
25×150/10"×60" R	3	1,125	23,58	30	33,75	707,40
60×120/24"×48" R	2	1,4400	28,00	35	50,40	980,00
60×60/24"×24" R	4	1,4400	25,60	32	46,08	819,20
60×60/24"×24" R <b>OUT2.0</b>	2	0,7200	32,40	30	21,60	972,00
30×60/12"×24" R	8	1,4400	26,88	40	57,60	1075,20
22,5×90/9"×36" R	7	1,4175	25,76	36	51,03	927,36
7×60/27 <sup>8/16</sup> "×24" R Battiscopa	10	6,0000	8,00	70	420,00	560,00

City is a registered trademark  
owned by Ceramiche Refin S.p.A.

© Copyright 05.2026  
Ceramiche Refin SpA

AZIENDA CON SISTEMA  
DI GESTIONE QUALITÀ  
CERTIFICATO DA DNV GL  
= ISO 9001 =



Ceramiche Refin si riserva il diritto di apportare in qualsiasi momento modifiche o variazioni ai prodotti presenti in questo catalogo.

La proprietà intellettuale del presente catalogo è riservata per tutti i Paesi.  
La traduzione, la riproduzione, la memorizzazione elettronica e l'adattamento totale o parziale e con qualsiasi mezzo dei suoi contenuti comporta la violazione dei diritti di copyright di Ceramiche Refin.

I prodotti raffigurati nelle immagini del presente catalogo sono protetti secondo la normativa vigente in materia di proprietà industriale.

Le informazioni contenute nel presente catalogo sono il più possibile esatte, ma non sono da ritenersi legalmente vincolanti. Per esigenze di produzione ci riserviamo il diritto di apportare eventuali modifiche che si rendono necessarie.

Peso, colori e misure sono soggetti alle inevitabili variazioni tipiche del processo di cottura della ceramica. I colori indicati si avvicinano quanto più possibile a quelli reali nei limiti consentiti dai processi di stampa.

Le caratteristiche tecniche riportate su questo catalogo annullano e sostituiscono quelle dei precedenti cataloghi.

Ceramiche Refin reserves the right to change the products presented in this catalogue at any time.

All the intellectual property rights of this catalogue are reserved in all countries.  
Translation, reproduction in print or electronic form, and adaptation, in whole or in part, using any means of the contents of the said catalogue constitute a violation of Ceramiche Refin's copyright.

The products featured in the photographs in this catalogue are protected by current industrial property legislation. The information contained in this catalogue is correct to the best of our knowledge, but is not to be construed as legally binding. We reserve the right to make change as and when production requirement under them necessary.

The governing Size are the metric ones – measurements in inches are for only. Weight, colours and size are subject to the usual variation expected in fi red ceramic products.

Colours shown are as close to the real colour as the limitation of the printing process will allow.  
The technical features listed in this catalogue cancel and replace those of the previous catalogues.

Ceramiche Refin  
SpA

---

Sede legale

Via I Maggio, 22  
Salvaterra  
42013 Casalgrande (RE)  
Italia

Showroom aziendale

Via G. Ambrosoli, 2  
Salvaterra  
42013 Casalgrande (RE)  
Italia

t +39 0522 990 499

f<sub>ITA</sub> +39 0522 849 270

f<sub>EXP</sub> +39 0522 990 578

e [info@refin.it](mailto:info@refin.it)

